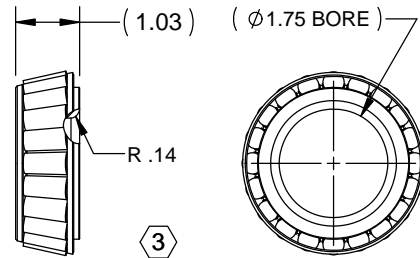


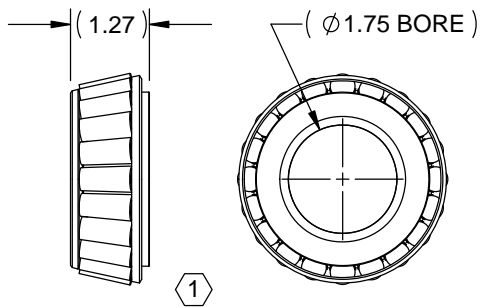
NOTES :

1. KIT CONTAINS:
 ONE X000-4300-J0414 CONE
 ONE X000-4300-J0412 RACE
 ONE X000-4300-J0416 CONE
 TWO X000-4300-J0417 CONES
 THREE X000-4300-J0415 RACE

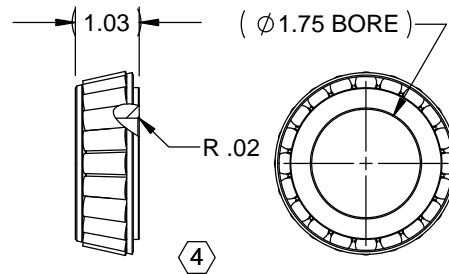


1X X000-4300-J0416 CONE

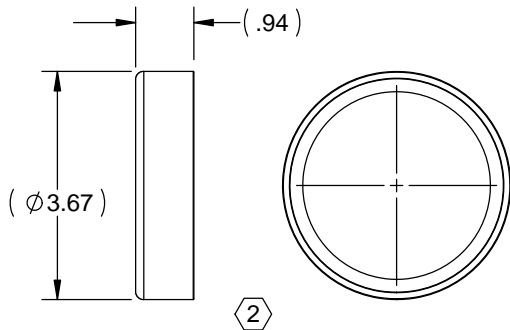
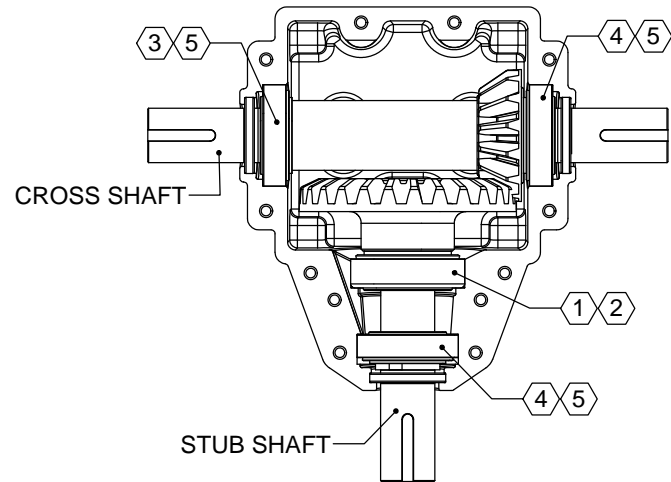
NOTE: OLDER MODELS MAY HAVE A DESIGN USING A RETAINING RING OR SPACER ON THE CROSS SHAFT, INSTEAD OF THE SHOULDER. IN THIS CASE USE THE #4 CONE AGAINST THE RETAINING RING OR SPACER AND THE #3 CONE BEHIND THE CROSS SHAFT GEAR.



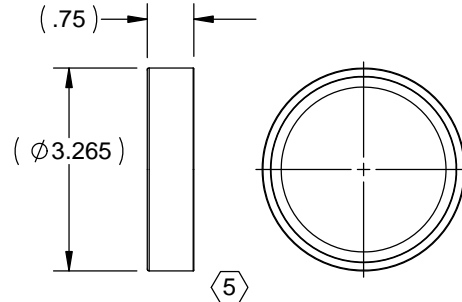
1X X000-4300-J0414 CONE



2X X000-4300-J0417 CONE




1X X000-4300-J0412 RACE



3X X000-4300-J0415 RACE

THE CROSS SHAFT GEAR MAY BE LOCATED ON THE OPPOSITE END OF THE SHAFT FROM WHAT IS SHOWN IN THE PICTURE. THE #4 BEARING CONE WILL NEED TO BE INSTALLED AGAINST THE GEAR.

 SUPERIOR GEARBOX COMPANY WWW.SUPERIORGEARBOXDIRECT.COM	
KIT, BEARING, R600	
SIZE B PART NO. R600-8Z00-L0160	REV -
SCALE 1:1	DO NOT SCALE DRAWING
SHEET 1 OF 1	